



Flathead 1949-53  
"Strap Mount"  
and "Custom Mount"



## ALTERNATOR WIRING INSTRUCTIONS

### Important Notes: "6V + Ground ONLY"

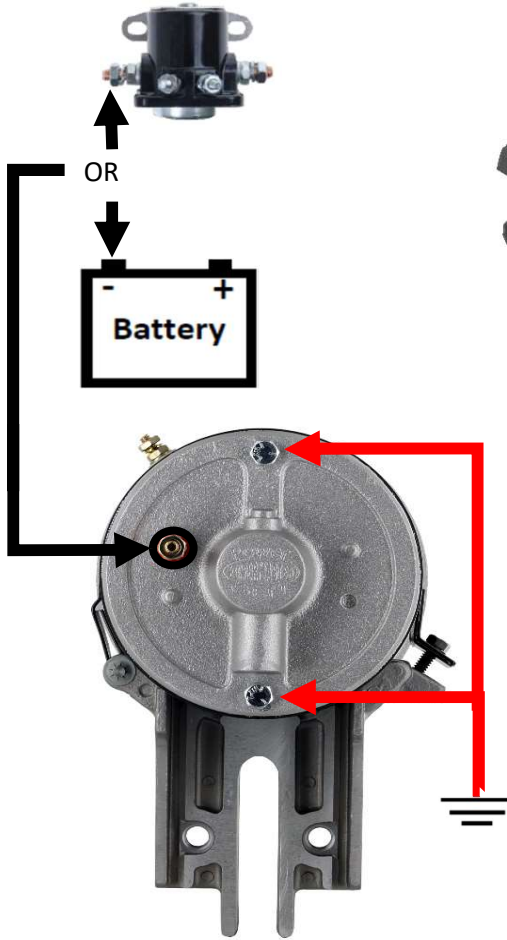
- These units are internally regulated and the OE external regulator must be bypassed, removed, or used for appearance only
- All units supplied with pulley for 5/8" V belt  
(Additional pulleys available)

Need Help, or Questions!

Tech Dept.

(630) 957-4019

Tech@powermasterperformance.com



"Custom Mount"  
Requires to create  
your own Bracket

Charge Indicator "Gen Light" Function  
This ONLY Applies To Part Numbers Ending  
in -2  
This connection has no effect on charging  
performance.  
(see additional instructions)

"Gen Light Post Size 10-24  
(-2 Part Numbers Only)



Attach Ground Strap to one  
of the rear case bolts. These  
units **DO NOT** ground  
through the mounting  
bracket

**Disconnect Battery Positive (+)**

**READ ALL INSTRUCTIONS IN BOX!**

**Charge Wires:** use minimum 8 gauge up to 6ft.

**Ammeters:** Do not reconnect the factory ammeter when using these units. Factory ammeters are typically limited to 30 amps. Please consider a volt gauge to monitor your charging system

**Alternator Ground:** The OE bracket will not supply a solid alternator ground. Always add an 8 gauge ground lead from alternator housing to engine block

**Battery must have a clean ground to the engine block.**

**Wire Connections:** Be sure all terminals are crimped securely, and connections are clean and tight.

**Belt Tension:** Inspect belt for signs of cracking or glazing. Replace if needed. **A loose belt will cause intermittent charging and generate excessive heat resulting in premature unit/bearing failure. Keep in mind "Alternator tight not generator loose"**

**A fully charged battery is at least 6.4V, not 6.0V**  
A weak/defective battery will cause premature failure.  
**Never disconnect the battery with engine running!** this causes voltage spikes that will damage the alternator

**FAILURE TO FOLLOW THESE INSTRUCTIONS MAY  
VOID YOUR WARRANTY**



Powermaster Performance  
1833 Downs Dr  
West Chicago, IL 60185  
www.powermasterperformance.com

# PowerGEN Application Guide

## Tech/Sales (630) 849-7754

E-mail [tech@powermasterperformance.com](mailto:tech@powermasterperformance.com)

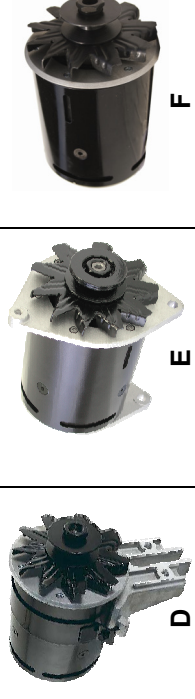


	A	B	C	D	E	F
	<b>Description</b>					
	<b>Standard</b>		<b>Part Number</b>			
	<b>Pulley</b>		<b>Chrome</b>	<b>Polish</b>	<b>Black</b>	
<b>GM PowerGEN (A)</b>						
90A GM Long (7.1" Fld Hsg) 12V			3/8"	182051	282051	82051
90A GM Long (7.1" Fld Hsg) 12V w/ Lamp Term			3/8"	182051-2	282051-2	82051-2
90A GM Long (7.1" Fld Hsg) 6V Pos Grd			3/8"	182056	282056	82056
90A GM Long (7.1" Fld Hsg) 6V Neg Grd '48-'54			3/8"	182057	282057	82057
<b>GM PowerGEN (B)</b>						
90A GM Short (6" Fld Hsg) 12V			3/8"	182111	282111	82111
90A GM Short (6" Fld Hsg) 12V w/ Lamp Term			3/8"	182111-2	282111-2	82111-2
90A GM Short (6" Fld Hsg) 6V Pos Grd			3/8"	182116	282116	82116
90A GM Short (6" Fld Hsg) 6V Neg Grd '48-'54			3/8"	182117	282117	82117
<b>Ford Flathead PowerGEN (C)</b>						
90A Ford '39-'48, 12V			5/8"	182011	282011	82011
90A Ford '39-'48, 12V w/ Lamp Term			5/8"	182011-2	282011-2	82011-2
90A Ford '39-'48, 12V "Shorty" 1.5" Shorter			5/8"	182013	282013	82013
90A Ford '39-'48, 12V w/ Lamp Term "Shorty" 1.5" Shorter			5/8"	182013-2	282013-2	82013-2
90A Ford '39-'48, 6V Pos Grd			5/8"	182016	282016	82016
<b>Ford Flathead PowerGEN (D)</b>						
90A Ford Strap Mtg. '49-'53, 12V			5/8"	182021	282021	82021
90A Ford Strap Mtg. '49-'53, 12V w/ Lamp Term			5/8"	182021-2	282021-2	82021-2
90A Ford Strap Mtg. '49-'53, 12V "Shorty" 1.5" Shorter			5/8"	182023	282023	82023
90A Ford Strap Mtg. '49-'53, 12V w/ Lamp Term "Shorty" 1.5" Shorter			5/8"	182023-2	282023-2	82023-2
90A Ford Strap Mtg. '49-'53, 6V Pos Grd			5/8"	182026	282026	82026
<b>Ford PowerGEN (E)</b>						
90A Ford Swing Mtg. 12V			3/8"	182101	282101	82101
90A Ford Swing Mtg. 12V w/ Lamp Term			3/8"	182101-2	282101-2	82101-2
90A Ford Swing Mtg. 6V Pos Grd			3/8"	182106	282106	82106
90A Ford T-Bird 1956-57 12V			1/2"	182155	282155	82155
90A Ford T-Bird 1956-57 12V w/ Lamp Term			1/2"	182155-2	282155-2	82155-2
90A Ford T-Bird 1955 6V Pos Grd—use '56-'57 p/n's for 12V upgrade			1/2"	182156	282156	82156
<b>Universal PowerGEN (F)</b>						
90A "Universal" 12V			5/8"	182091	282091	82091
90A "Universal" 12V w/ Lamp Term			5/8"	182091-2	282091-2	82091-2
90A "Universal" 6V Pos Grd			5/8"	182096	282096	82096



### CHROME PULLEYS

- 3/8" Belt  
P/N 1130
- 1/2" Belt  
P/N 1132
- 5/8" Belt  
P/N 1134
- 3/4" Belt  
P/N 1136



### BLACK PULLEYS

- 3/8" Belt  
P/N 1131
- 1/2" Belt  
P/N 1133
- 5/8" Belt  
P/N 1135
- 3/4" Belt  
P/N 1137

